

An aerial photograph of a retirement community. The central feature is a large, vibrant green lawn where several people are playing a game of tennis. To the left of the lawn is a building with a distinctive red and white striped roof. To the right is a large, modern building with a blue corrugated metal roof. The community is surrounded by lush green trees and well-maintained walkways. In the background, there are more residential buildings with red roofs and a parking lot with several cars. The overall atmosphere is bright and sunny, suggesting a pleasant living environment.

Welcome to SwanCare

swancare.com.au

Retirement Living | Home Care | Residential Aged Care



Welcome to SwanCare

Reliably caring for West Australian seniors since 1961 has earned SwanCare its trusted name as a leading retirement, home care and residential aged care provider. SwanCare is a not-for-profit, non-denominational and is a registered charity.

Experience has provided SwanCare its unique understanding and keen insights into the expectations of the modern retiree, thus providing our residents with a safe and vibrant community centred around enriching the lives of our residents every day.

SwanCare's fully integrated Bentley Park campus offers a wide variety of social engagement opportunities as well as continuum of care, allowing our residents to live the life they desire regardless of what stage they are within their retirement journey. Our exceptional onsite services and multi award-winning facilities, together with our highly skilled, caring and compassionate staff make choosing SwanCare an easy decision.

I am proud to invite you to experience our SwanCare community for yourself.

Graham Francis, CEO

National Retirement Village Survey

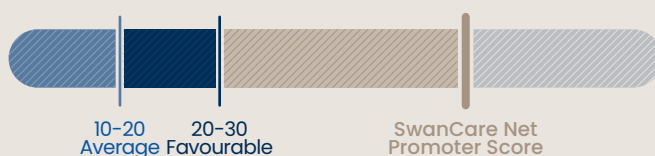


SwanCare Satisfaction Rating

compared with the national average of 8.3



SwanCare Net Promoter Score



SwanCare Annual Residents' Survey 2020



agree SwanCare is a supportive community



agree SwanCare is a safe and secure environment in times of uncertainty

Source: DCM National Resident Village Survey 2020.



Setting SwanCare Apart

SwanCare Bentley Park is a vibrant, safe and welcoming community providing peace of mind to our residents, enabling them to live the life they desire in the next phase of their lives.

Offering retirement living, home care and residential aged care all set on WA's largest fully integrated site located just 15 minutes from Perth CBD.

Operating as a not-for-profit organisation since 1961, SwanCare has a strong vision for the future aimed at enriching the lives of our residents every day. We are able to provide high quality, compassionate continuum of care throughout the retirement and aged care journey.

We recognise our staff are our most valuable resource when it comes to delivering the highest level of care and our residents are our biggest advocates.

SwanCare also operates SwanCare Australind Rise, a fantastic boutique retirement village just a short drive from Bunbury in the South West.



Retirement Living

The reasons for moving into a retirement village vary for everyone. Whether it be for increased peace of mind, reduced maintenance, lock and leave or to become more active surrounded by people who understand your stage of life. Whatever the reason, when you move to SwanCare, you can be confident in the decision that you have made about your future.

With over 600 residents living independently at Bentley Park there is a wide range of homes available, including lease-for-life as well as a select number of affordable rental units, providing options for all budgets and tastes.

Lease for Life Options

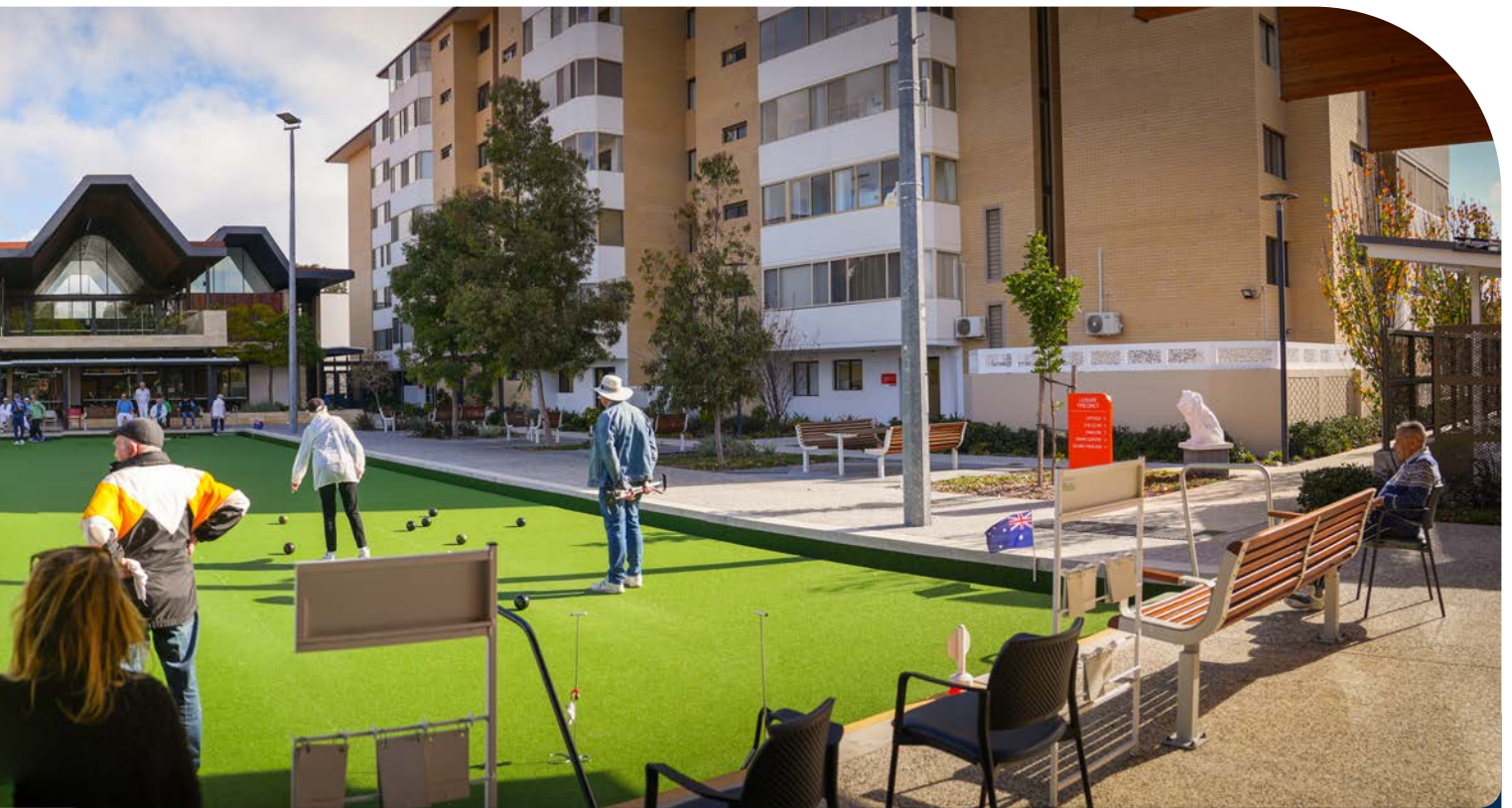
SwanCare Bentley Park's retirement village offers a range of accommodation options from suburban style villas, larger modern apartments, through to more compact apartments in a variety of sizes and suited to all budgets.

Rental Options

SwanCare Bentley Park also offers affordable rental accommodation across studio apartments, bedsit units and one-bedroom apartments. All configurations are well maintained and move in ready. SwanCare's rental units are highly sought after.

Visitor Accommodation

When family and friends come to visit, they are welcome to stay at one of our visitor villas or apartments, just a short walk from your home. The larger style villas accommodate up to four guests. Daily and weekly rates for visitor accommodation is affordable with parking available throughout the campus.

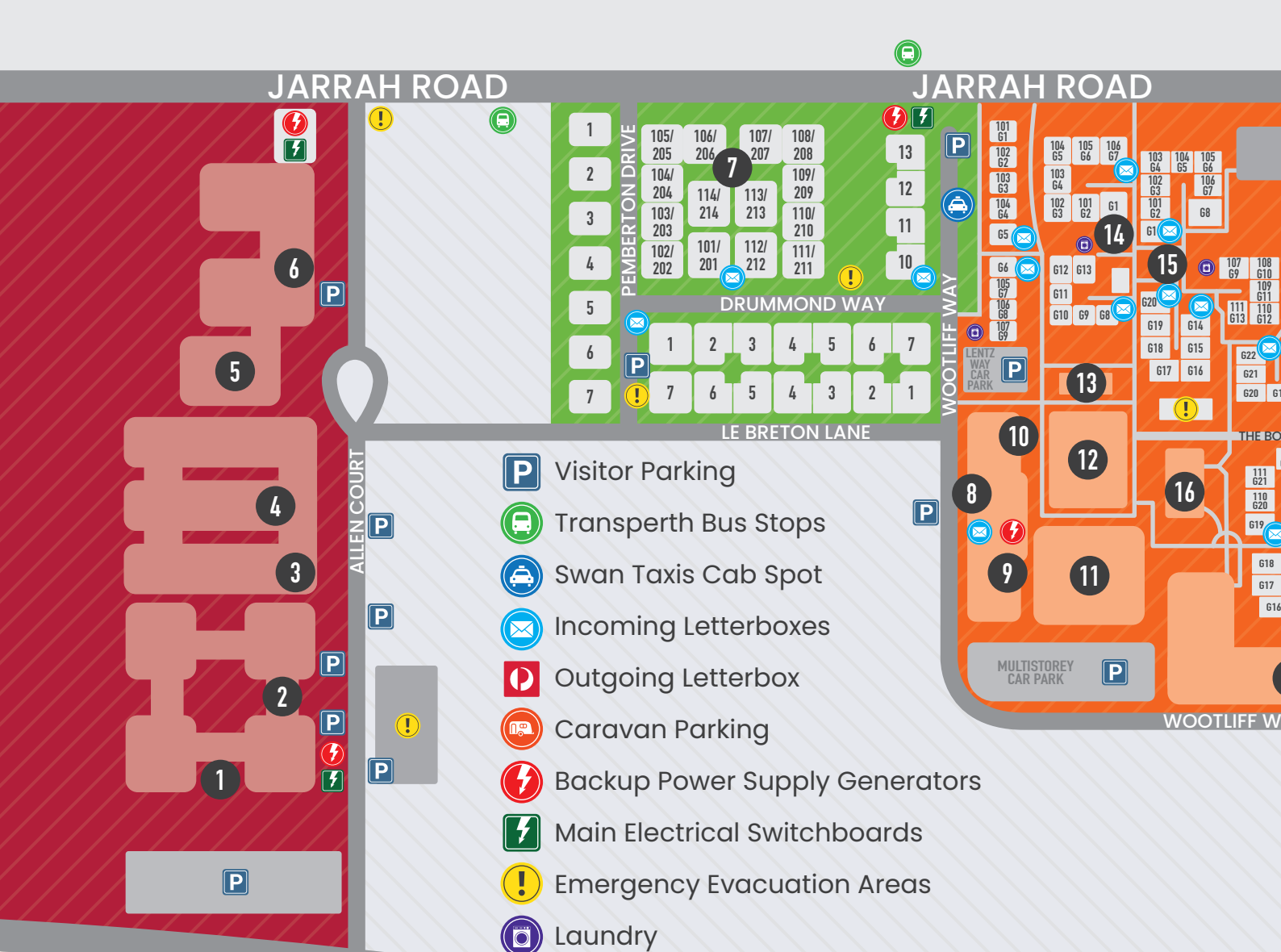


Enriching Your Retirement Journey

Driven by the ideas of community and sustainability, the modern retiree will delight in SwanCare's \$20m Leisure Precinct which encompasses improved pedestrian linkages drawing activities together within a central hub to provide connectivity for residents and visitors alike. At SwanCare, our residents can do as much or as little as they desire.

SwanCare Bentley Park's services & features:

- Over 40 clubs & groups across a broad range of interests & abilities
- Monthly calendar of events & activities
- SwanCare quarterly magazine
- Multi award-winning leisure precinct including a pool, gym, wellness room, activity rooms & function facilities
- 24-hour onsite security & support services
- Medical & allied health
- Caravan & boat storage
- Free SwanMobile golf buggy transport throughout the campus
- Direct public transport link
- Jarrah Café & Spritz Café
- Op shop
- Hair & beauty salon
- Grocery store
- Residents' workshop
- Auditorium
- Computer facilities
- Library
- Community gardens & vegetable beds
- Onsite meal delivery services available
- Onsite laundry services available



LOCATION GUIDE

- 1. Spritz Laundry Services
3 Allen Court ☎ 6250 0141
- 2. SwanCare Ningana
3 Allen Court ☎ 6250 0650
- 3. Spritz Café
3 Allen Court ☎ 6250 0163
- 4. SwanCare Kingia
5 Allen Court ☎ 6250 0100
- 5. Main Production Kitchen
Spritz Catering ☎ 6250 0126
- 6. SwanCare Tandara
73 Jarrah Road ☎ 6250 0101

- 7. Drummond Apartments
8 Drummond Way

- 8. Mavis Cleaver Court
14 Woolliiff Way
- 9. Community Living Office
8 Mavis Cleaver Ct ☎ 6250 0320
- 10. SwanCare At Home Office
10 Mavis Cleaver Ct ☎ 6250 0300
Resident Support Services Office
10 Mavis Cleaver Ct ☎ 6250 0020

- 11. The Club: gymnasium,
swimming pool, activity rooms
- 12. Outdoor Bowling Green
- 13. Pavilion
- 14. Lindsey Rise
- 15. Pugh Place
- 16. Swan Centre
- 17. SwanCare Waminda
1 Adie Court ☎ 6250 0051
- 18. Bollig Gardens
- 19. Sound Pavilion
- 20. Phillips Close

- 21. Jarrah Café
2 Adie Court ☎ 6250 0130
- 22. Akora Apartments
2 Adie Court
- 23. Hairdresser
- 24. Grocery Store
- 25. Indoor Bowling Green

- 26. Richard Cleaver Lodge
34 Graham Crescent
- 27. Medical Centre/Podiatrist
- 28. Maintenance Workshop
- 29. Residents' Workshop
- 30. Vilips Row
- 31. Op Shop
- 32. Lithgo Court

- 33. SwanCare Admin Building
26 Plantation Drive ☎ 6250 0000
Ground Floor: Auditorium
Level 1: Administration & Sales
Level 2: Boardroom/Training Room
Level 3: Residential Apartments
- 34. Library
- 35. Plantation Apartments
24 Plantation Drive



SwanCare

BENTLEY PARK MAP



Residential Aged Care

Choosing a residential aged care centre is one of the most important decisions to be made in later life. At SwanCare, we appreciate that residential aged care is as much about providing support and peace of mind to the family, as it is about caring for the residents.

As a premier provider of aged care services since 1961, residents can relax in the knowledge that they are receiving dedicated, compassionate care, delivered by an award-winning, highly skilled team of staff members.

Our trusted and dedicated team provide a level of empathy and professionalism that ensures the residents' needs, comfort and dignity is preserved in every interaction.

All residential aged care centres are designed and furnished for the comfort of the residents. Our residents look forward to mealtimes with delicious dietitian approved meals, incorporating a wide variety of cuisines, freshly cooked onsite daily.

We believe a sense of community is important. All residential aged care centres have a weekly activity calendar filled with a wide variety of engaging events to foster resident emotional, physical, spiritual and mental wellbeing.

Building a relationship with families is important to us. Our staff are committed to making the transition into care as smooth as possible and are on hand to support your family through this time. We welcome families to join in the activities along with their loved ones.



Our Residential Aged Care Centres

Residential aged care is suitable for seniors who can no longer live independently at home. This may be due to physical or mental limitations, personal safety concerns or increasing health and daily living needs.

Set within our fully integrated site, SwanCare has four residential aged care centres all located a short walk from each other and the retirement living community catering to a wide range of services to suit most needs.

Our residential aged care centres can accept residents with unique and intricate care needs supporting individual care and rehabilitation plans. We are open to assisting individuals with a wide range of health conditions as we actively pursue staff specialists training based on residents' needs.

Offering a broad range of clinical services with registered nurses onsite 24-hours a day, SwanCare is well equipped to provide a range of complex care needs, dementia care, palliative care and respite in a supportive environment. Delivering high quality care and assistance to our residents is our first priority.





SwanCare At Home

SwanCare At Home provides a range of support services to assist you to continue to live independently in your own home for longer.

SwanCare At Home offers two categories of services: Government Funded Home Care and Fee-for-Service Home Care Plus. Both service offerings are flexible and are personalised to every individual. Our home care services align with the Australian Government's Home Care Packaged Program, giving you more choice and control over the types of care and services you receive.

Each SwanCare At Home client is unique. Our home care team will meet with you to understand your challenges and discuss how we can provide the home support services that suit you. Whether you require extra assistance for cooking and laundry, personal care or nursing, SwanCare can assist.

As a Western Australian owned and operated leading provider of home care services, we are committed in delivering high quality and consistent care ensuring you have all the support and advice you need.

No matter what service you use, you will enjoy the same SwanCare compassion and respect that you have come to expect from a leading home care service provider in WA.



General
support
services



Help to
stay healthy



Personal
assistance



SwanCare Australind Rise

SwanCare's boutique retirement village, Australind Rise, is set between the Collie River and the Indian Ocean overlooking bushland and the Leschenault Inlet in the beautiful South West. Just a short drive from Bunbury, this friendly gated retirement village provides companionship, ease of living and peace of mind.

A contemporary interpretation of retirement living, the vibrant Australind Rise community embraces the slower pace of retirement, with a modern edge that is relaxing, without slowing down.

The Forrest Highway means at Australind Rise you are only 90 minutes from Perth, while the best of the South West has to offer is on your doorstep.

Within the community, you can make use of the heated swimming pool, gym, watch a movie in the residents' lounge, host a BBQ or browse the well-stocked library.

Nearby are café's, restaurants, shops and the Australind Leisure Centre. Golfers can choose between three local clubs or those who like to fish can throw a line in the Leschenault Inlet just at the end of the street. Being part of the Australind community offers plenty to do including crabbing, kayaking and leisurely walks, or if you prefer, simply relaxing in your own resort-style clubhouse at SwanCare Australind Rise.



SwanCare

SwanCare Bentley Park

26 Plantation Drive
Bentley, WA 6102

Ph: 08 6250 0000
info@swancare.com.au

swancare.com.au

Enriching lives in our community