



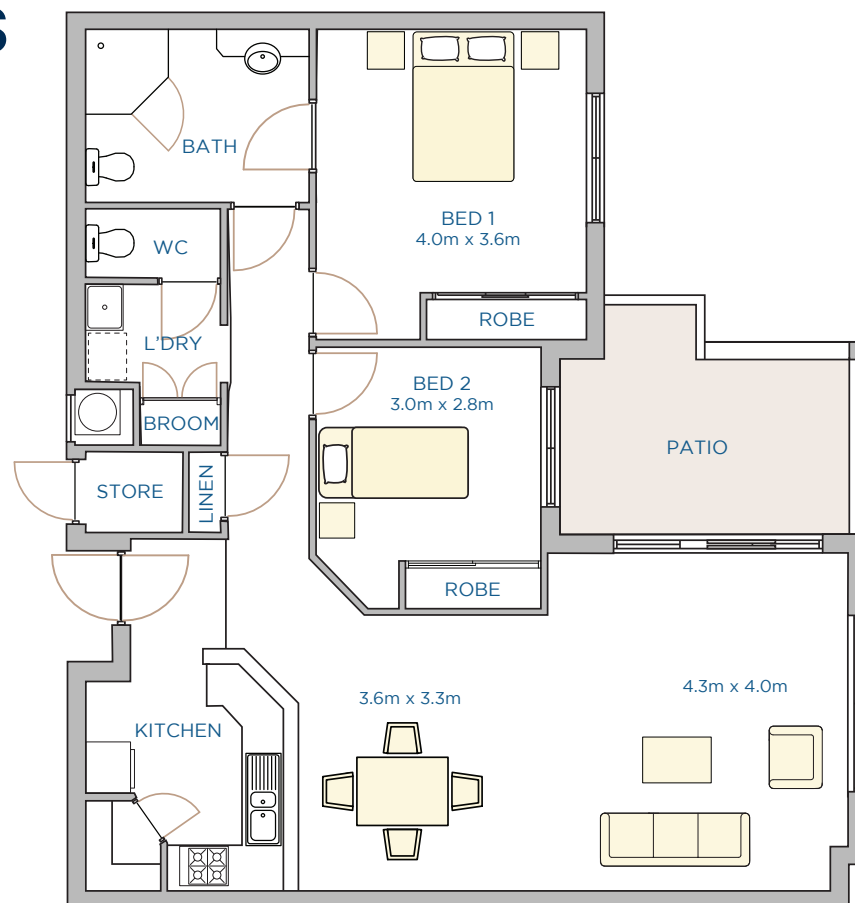
DRUMMOND APARTMENTS 2 BED

Modern apartments in a friendly complex

Enjoy apartment living in this secure two story complex with basement parking and a sunny communal courtyard.

These two bedroom, one and a half bath apartments feature open-planned kitchen living dining with sliding doors to the spacious balcony or courtyard. The master bedroom offers the convenience of the modern ensuite and garden views.

With an externally accessible store room, built-in robes as well as linen and broom closets, you can bring everything with you.



2



1.5



1



90m²
approx

BASEMENT PARKING
STORAGE
GAS/ELECTRIC HWS

